

HBS COIL

HBS BOUND SCREWS

QUICK, IN SERIES USE

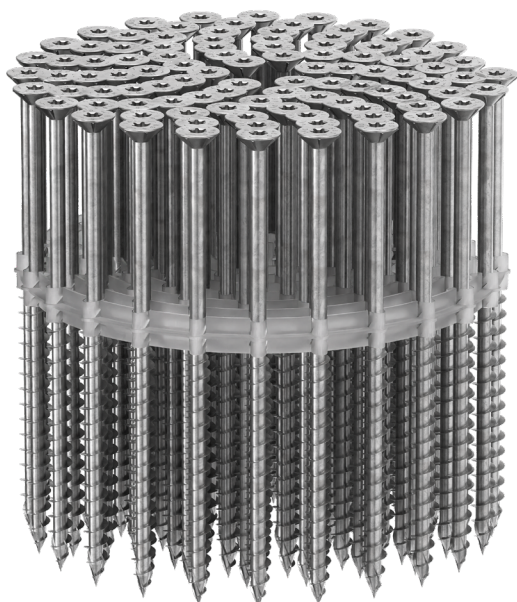
Quick and precise installation. Fast and safe execution thanks to the special binding.

HBS 0.24 inch

Also available in a diameter of 0.24 inch (#14), ideal for quick wall-to-wall fastening in CLT structures.

FAST

With the 3 THORNS tip, screw grip becomes more reliable and faster, while maintaining the usual mechanical performance. More speed, less effort.



UK
CA
UKTA-0836
22/6195

CE
ETA-11/0030



DIAMETER [in]

0.12 **0.16** 0.24 0.48

LENGTH [in]

1/2 **1** 3 1/8 39 3/8

EXPOSURE CONDITION



ATMOSPHERIC CORROSIVITY



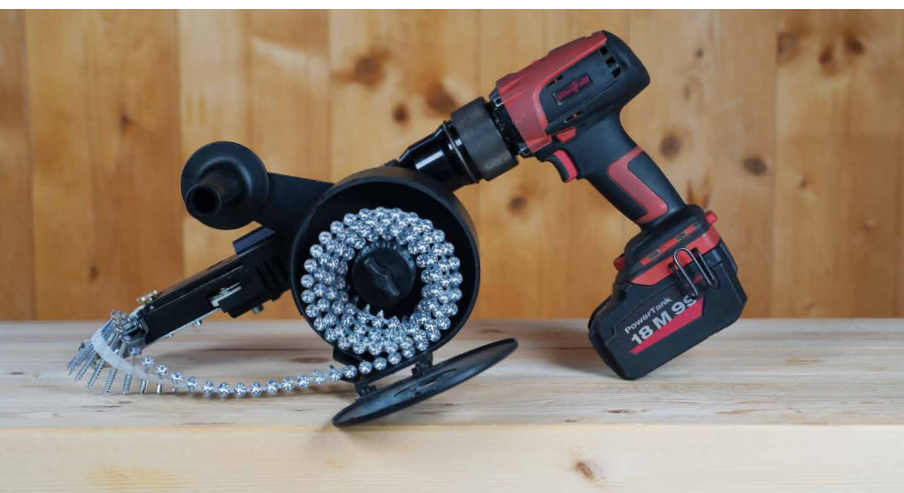
WOOD CORROSIVITY



MATERIAL



electrogalvanized carbon steel



FIELDS OF USE

- timber based panels
- fibreboard, MDF, HDF and LDF
- plated and melamine faced panels
- solid timber
- glulam (Glued Laminated Timber)
- CLT and LVL
- high density woods

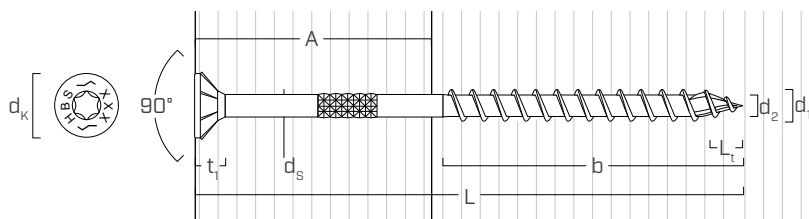
CODES AND DIMENSIONS

d ₁ [mm] [in]	CODE	L [mm] [in]	b [mm] [in]	A [in]	pcs/ [in]	pcs
4 0.16 #7 TX 20	HH10600459(*)	25	1 18	11/16	1/4	- 3000
	HZB430	30	1 3/16 16	5/8	9/16	167 3000
	HZB440	40	1 9/16 24	15/16	5/8	167 3000
	HZB450	50	1 15/16 30	1 3/16	13/16	125 2000

(*)fully-treaded screw

d ₁ [mm] [in]	CODE	L [mm] [in]	b [mm] [in]	A [in]	pcs/ [in]	pcs
4,5 0.18 #9 TX 20	HZB4550	50	1 15/16 30	1 3/16	13/16	125 1500
5 0.20 #11 TX 25	HZB560	60	2 3/8 30	1 3/16	1	125 1250
	HZB570	70	2 3/4 35	1 3/8	1 1/4	125 625
	HZB580	80	3 1/8 40	1 9/16	1 1/2	125 625
6 0.24 #14 TX 30	HZB670	70	2 3/4 35	1 3/8	1/16	125 625
	HZB680	80	3 1/8 35	1 3/8	3/8	125 625

GEOMETRY | HZB



Nominal diameter	d ₁	[in] ⁽¹⁾	0.16	0.18	0.20	0.24
Outer thread diameter	d ₁	[mm]	4	4,5	5	6
		[in]	0.157	0.177	0.197	0.236
Head diameter	d _K	[in]	0.315	0.354	0.394	0.472
Root diameter	d ₂	[in]	0.100	0.110	0.134	0.156
Shank diameter	d _S	[in]	0.108	0.124	0.144	0.169
Head thickness	t ₁	[in]	0.110	0.110	0.122	0.177
Tip length	L _t	[in]	0.157	0.177	0.197	0.236
Pre-drilling hole diameter ⁽²⁾	d _{V,G≤0.55}	[in]	-	-	1/8	5/32
Pre-drilling hole diameter ⁽³⁾	d _{V,G>0.55}	[in]	-	-	9/64	5/32

⁽¹⁾The nominal diameter of the screw is converted into imperial units and rounded up to the nearest decimal point.

⁽²⁾Pre-drilling applies to timber with G≤0.55 (optional).

⁽³⁾Pre-drilling applies to timber with G>0.55 (required).

For mechanical properties and structural values see HBS on page 36.

ADDITIONAL PRODUCTS

CODE	description	d ₁	lengths	pcs
		[mm] [in]	[mm] [in]	
HH3373	automatic loader for cordless screwdriver A 18 M BL	4 3/16	25-50 1-2	1
HH3372	automatic loader for cordless screwdriver A 18 M BL	4,5-6 3/16-1/4	40-80 19/16-3 1/8	1
HH3352	powered screwdriver	4 3/16	25-50 1-2	1
HH3338	powered screwdriver	4,5-6 3/16-1/4	40-80 19/16-3 1/8	1
HH14411591	extension	-	-	1
HZB6PLATE	adapter plate for HZB Ø6	-	-	1
HH14001469	TX30 M6 bit for HZB Ø6	-	-	1

Further information on page 429.

Ø0.24 inch HBS COIL APPLICATION

The adapter plates for use of 0.16, 0.18, and 0.20 inch diameter HBS COIL screws are already supplied with the respective screwdriver loaders. To use HBS COIL screws with a diameter of 0.24 inch, the adapter plates supplied must be replaced with the adapter plate HZB6PLATE. For HBS COIL screws diameter 0.24 inch it is also necessary to use the appropriate TX30 bit (code HH14001469).

We recommend using the extension HH14411591 for an easier installation of the screws on horizontal planes.

